



Work Package 5 Meeting  
 Rome, 16th and 17th of May 2013

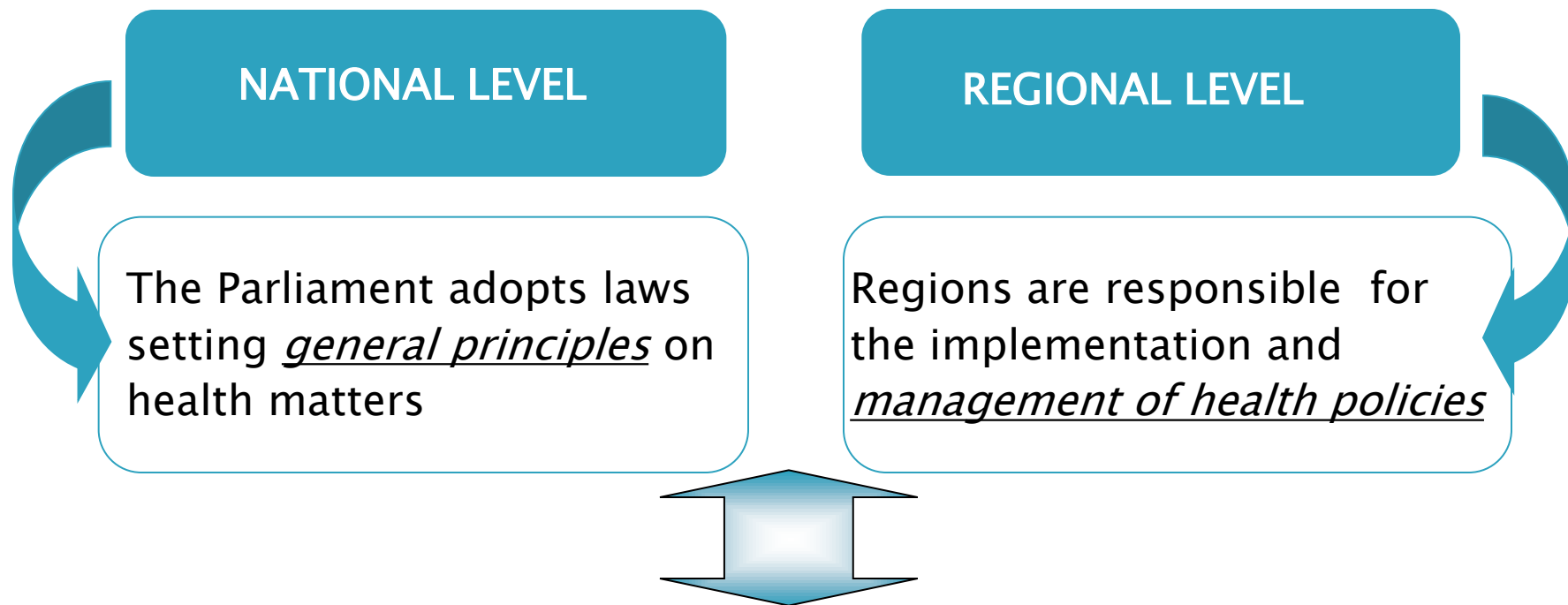


# Focus on Italy pilot study

»» Annalisa Malgieri – WP5



Joint Action on European  
Health Workforce  
Planning and Forecasting

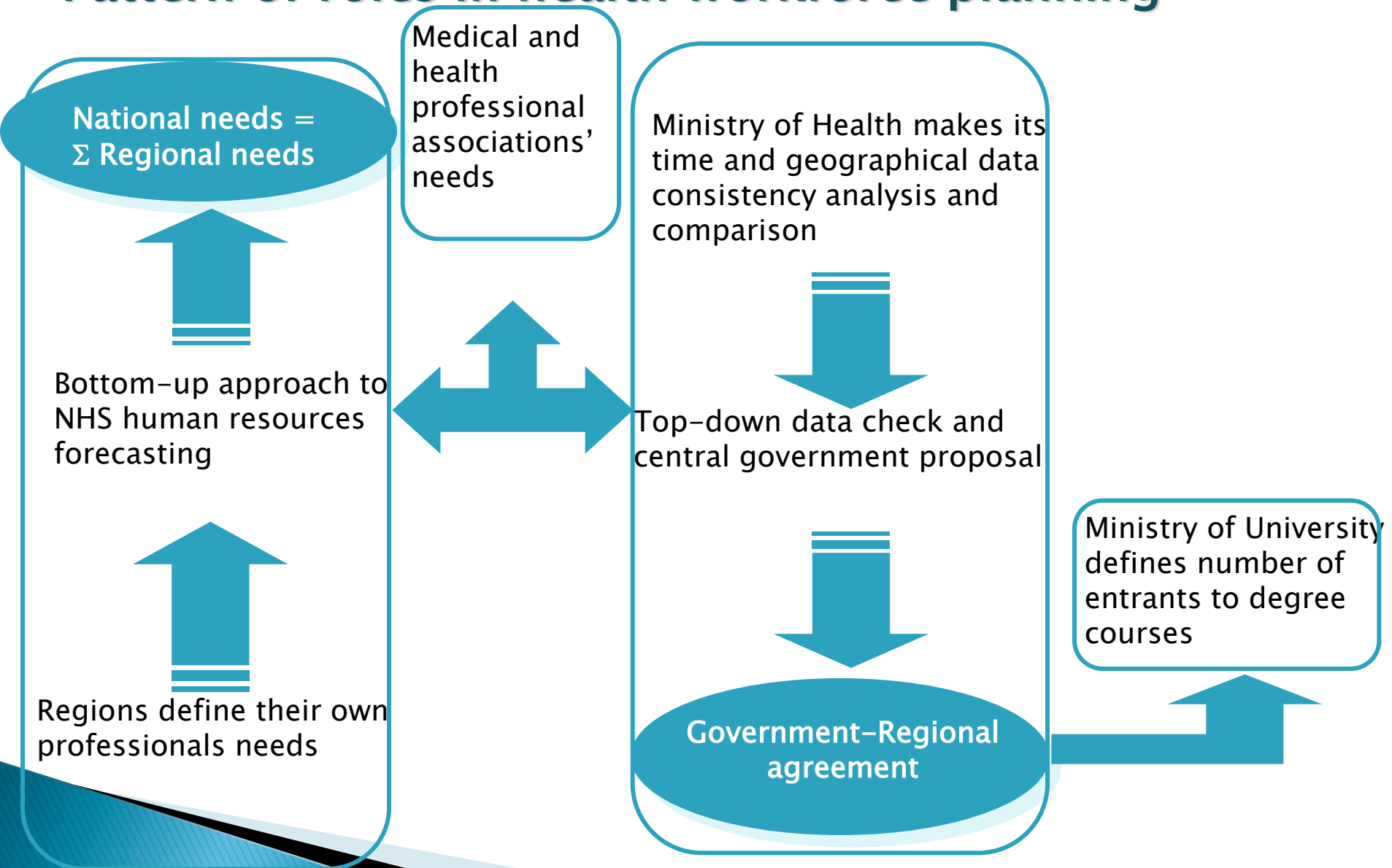


The Italian Healthcare system is characterized by strong public sector presence:

- ✓ Local Health Authorities, Public Hospitals, Universities,...
- ✓ Public health spending accounts for about 79% of total expenditure

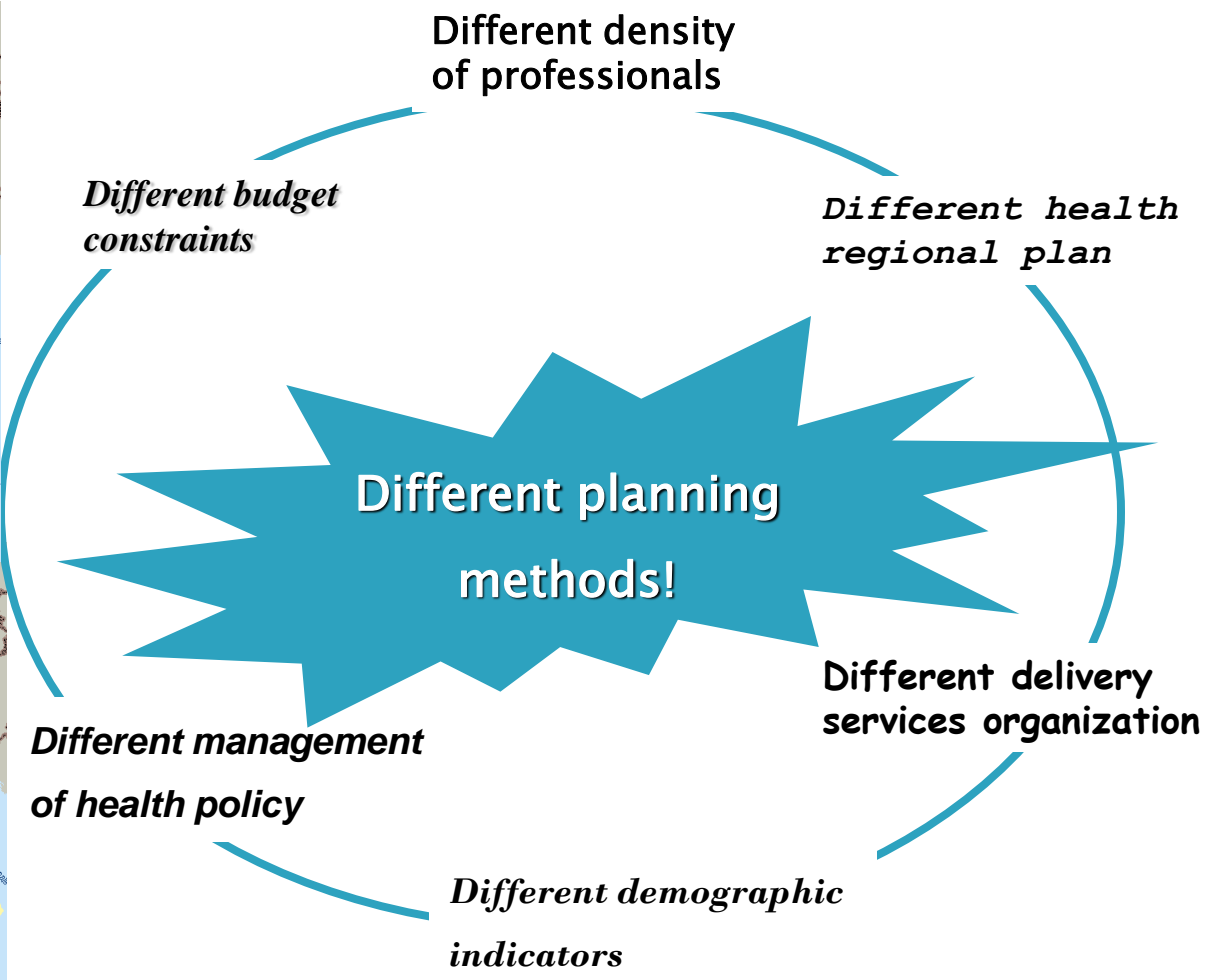


# Pattern of roles in health workforce planning





# Diversity among Regions...

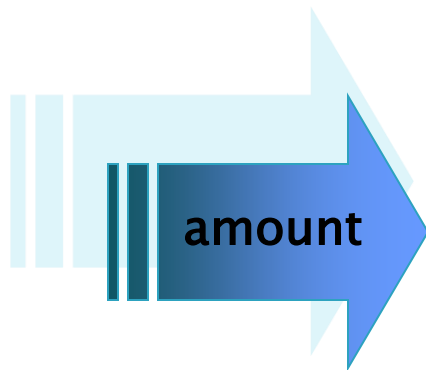




# Current critical issues in the process

Single regional needs

National needs overall



≠ Collectivity considered

≠ Variables investigated

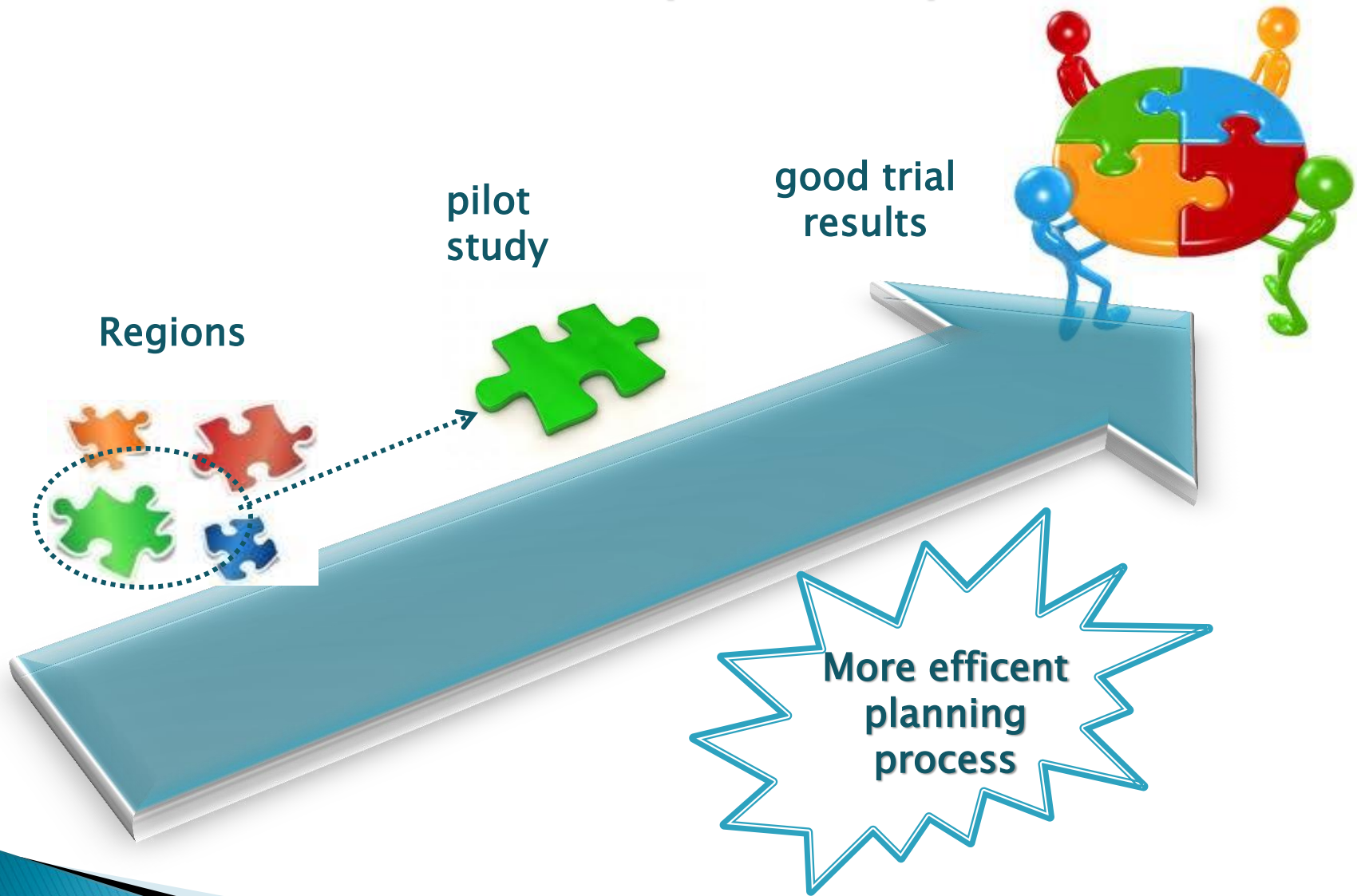
≠ Methodology applied

≠ Participants involved

≠ Indicators used

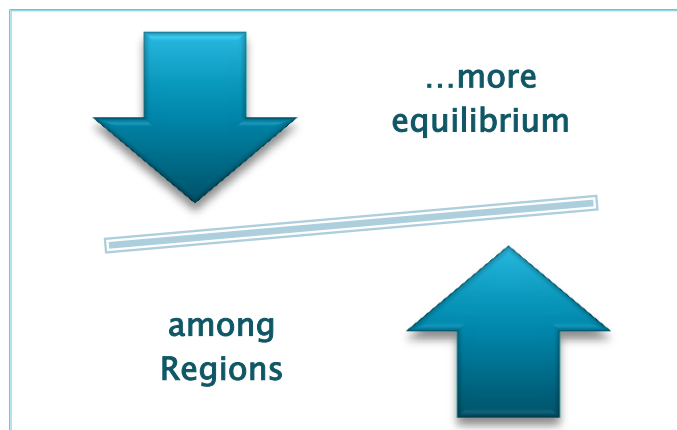
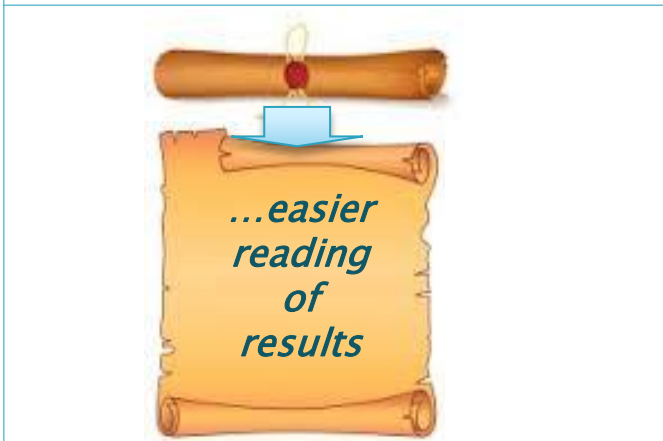
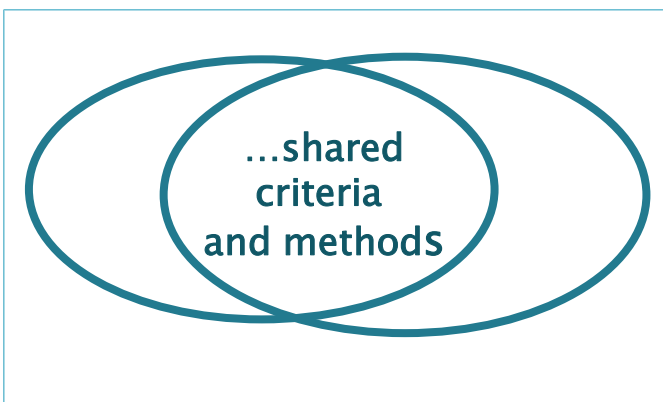


# What will we await from pilot study?





# Thanks to...



provide methodologies that Regions may adapt to their needs







THANK YOU